

Ersatzteilliste

(1.006-706.0) B 60/10 C HYGIENE

Inhaltsverzeichnis

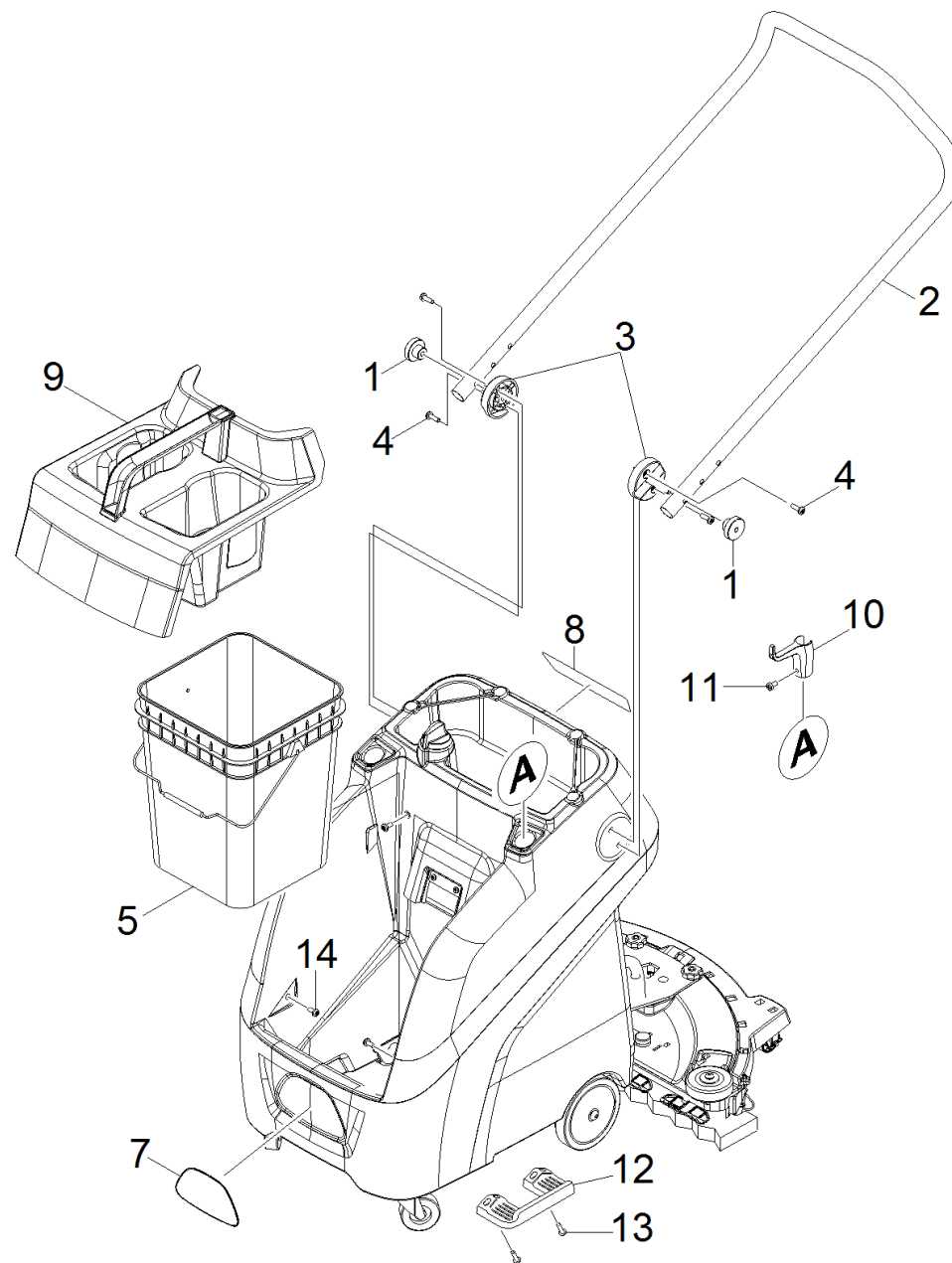
B 60/10 C HYGIENE (1.006-706.0)	3
20 ETL B 60/10 C HYGIENE (5.973-190.0)	4
10 Griff	5
20 Pumpe	7
21 Pumpe Befestigung	8
22 Pumpe	10
30 Leitungssystem	12
40 Raeder	14
50 Saugbalken	16
51 Saugbalkenanhebung	17
52 Saugbalken	19
3 ASM, FLIPPER (8.637-781.0)	21

B 60/10 C HYGIENE (1.006-706.0)

POS	Artikelnr.	Beschreibung	Anzahl	Einheit
20	5.973-190.0	ETL B 60/10 C HYGIENE	1.000	ST

20 ETL B 60/10 C HYGIENE (5.973-190.0)

POS	Beschreibung	Anzahl	Einheit
10	Griff	1.000	ST
20	Pumpe	1.000	ST
30	Leitungssystem	1.000	ST
40	Raeder	1.000	ST
50	Saugbalken	1.000	ST

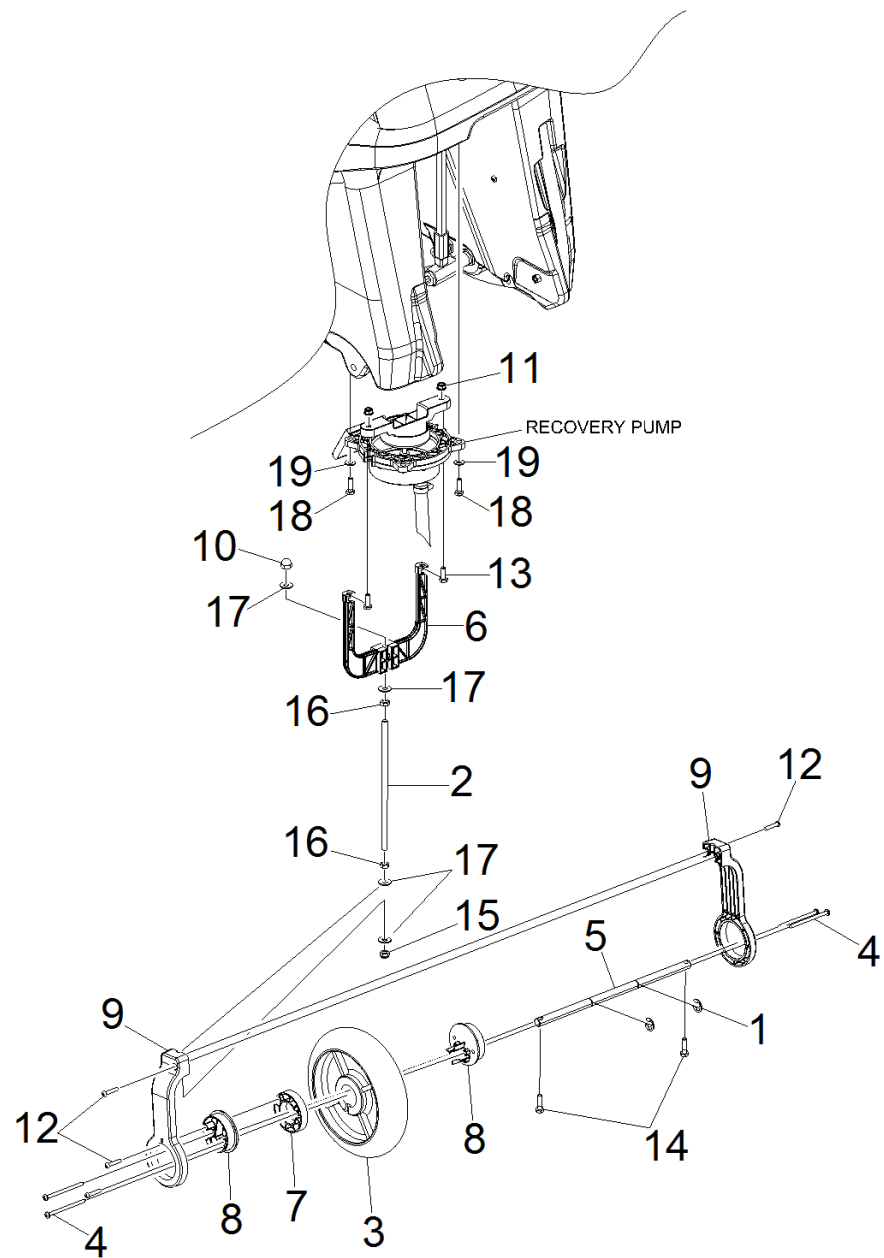


10 Griff

POS	Artikelnr.	Beschreibung	Anzahl	Einheit
1	8.621-969.0	Drehknopf	2.000	ST
2	8.637-311.0	HANDLE, BLACK SCRUBBER	1.000	ST
3	8.637-456.0	PIVOT, HANDLE	2.000	ST
4	8.627-610.0	SCREW, 1/4-20 X .75 PHPNHMS	2.000	ST
5	8.637-536.0	BUCKET, 4 GALLON	4.000	ST
7	8.633-516.0	Schild	1.000	ST
8	8.637-765.0	LABEL, B 60/10 C ECO	1.000	ST
9	8.637-567.0	ASSY, UTILITY TRAY	1.000	ST
10	8.637-540.0	HOOK, ACCESSORY	1.000	ST
11	7.777-999.0	Bevorratung eingestellt	1.000	ST
12	8.637-438.0	ACCESSORY HOLDER	1.000	ST
13	7.303-113.0	Schraube 6x25 -10.9-R2R (In6Rd)	2.000	ST
14	8.622-374.0	Schraube 1/4-20 X.59 PPHMS SS C	4.000	ST

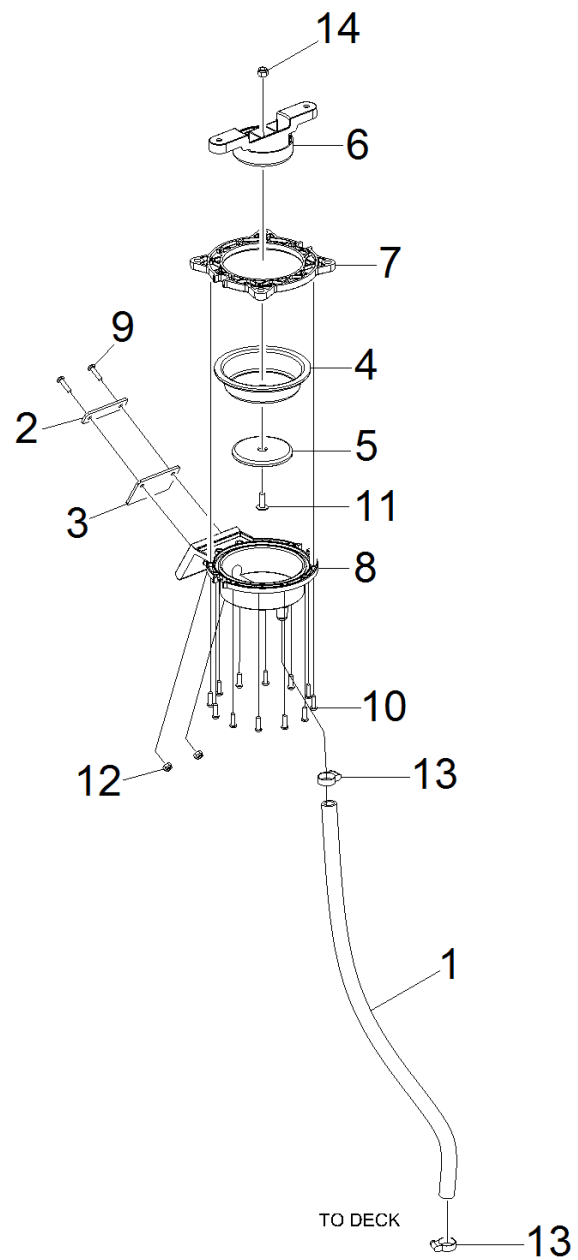
20 Pumpe

POS	Beschreibung	Anzahl	Einheit
21	Pumpe Befestigung	1.000	ST
22	Pumpe	1.000	ST



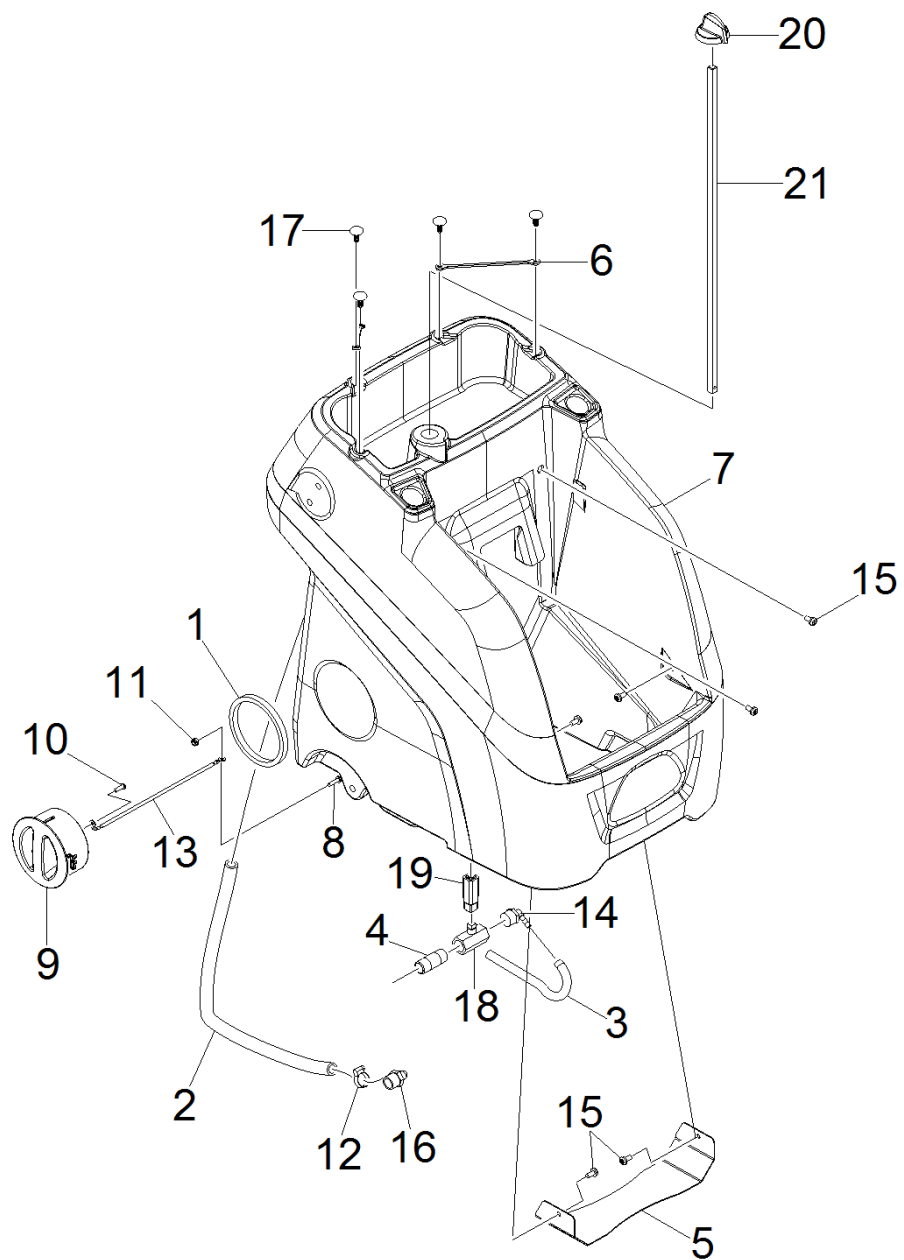
21 Pumpe Befestigung

POS	Artikelnr.	Beschreibung	Anzahl	Einheit
1	8.637-606.0	RING, 1/2" SS E RETAINING	2.000	ST
2	8.637-543.0	ROD, CONNECTION	1.000	ST
3	8.637-538.0	WHEEL, 8 OD X 2 X 1.38 ID PERFORMA	1.000	ST
4	8.637-535.0	SCREW, 10-12 X 3.0 PHPNHSMS SS TYPEA	4.000	ST
5	8.637-534.0	AXLE, .5" DIA X 11.9"	1.000	ST
6	8.637-450.0	YOKE, PUMP	1.000	ST
7	8.637-445.0	HUB, WHEEL	1.000	ST
8	8.637-444.0	ECCENTRIC	2.000	ST
9	8.637-443.0	YOKE, WHEEL	2.000	ST
10	8.637-204.0	NUT, 5/16-18 HEX ACORN, SS	1.000	ST
11	8.636-031.0	NUT, 1/4-20 FLG SS NYL	2.000	ST
12	8.632-791.0	Schraube KA50X25, PT OHS, WN1412, PLTD	4.000	ST
13	8.627-475.0	Schraube	2.000	ST
14	8.627-381.0	SCREW	2.000	ST
15	8.627-184.0	Mutter 5/16-18 HEX NYLOCK THIN SS	1.000	ST
16	8.622-230.0	Mutter 5/16-18 JAM SS C	2.000	ST
17	8.601-067.0	Scheibe 5/16 FLAT SS	4.000	ST
18	8.627-488.0	SCR, 1/4-20 X 7/8 HHCS GR5 PLT	2.000	ST
19	8.601-063.0	Scheibe 1/4 ID X 5/8 OD SS	2.000	ST



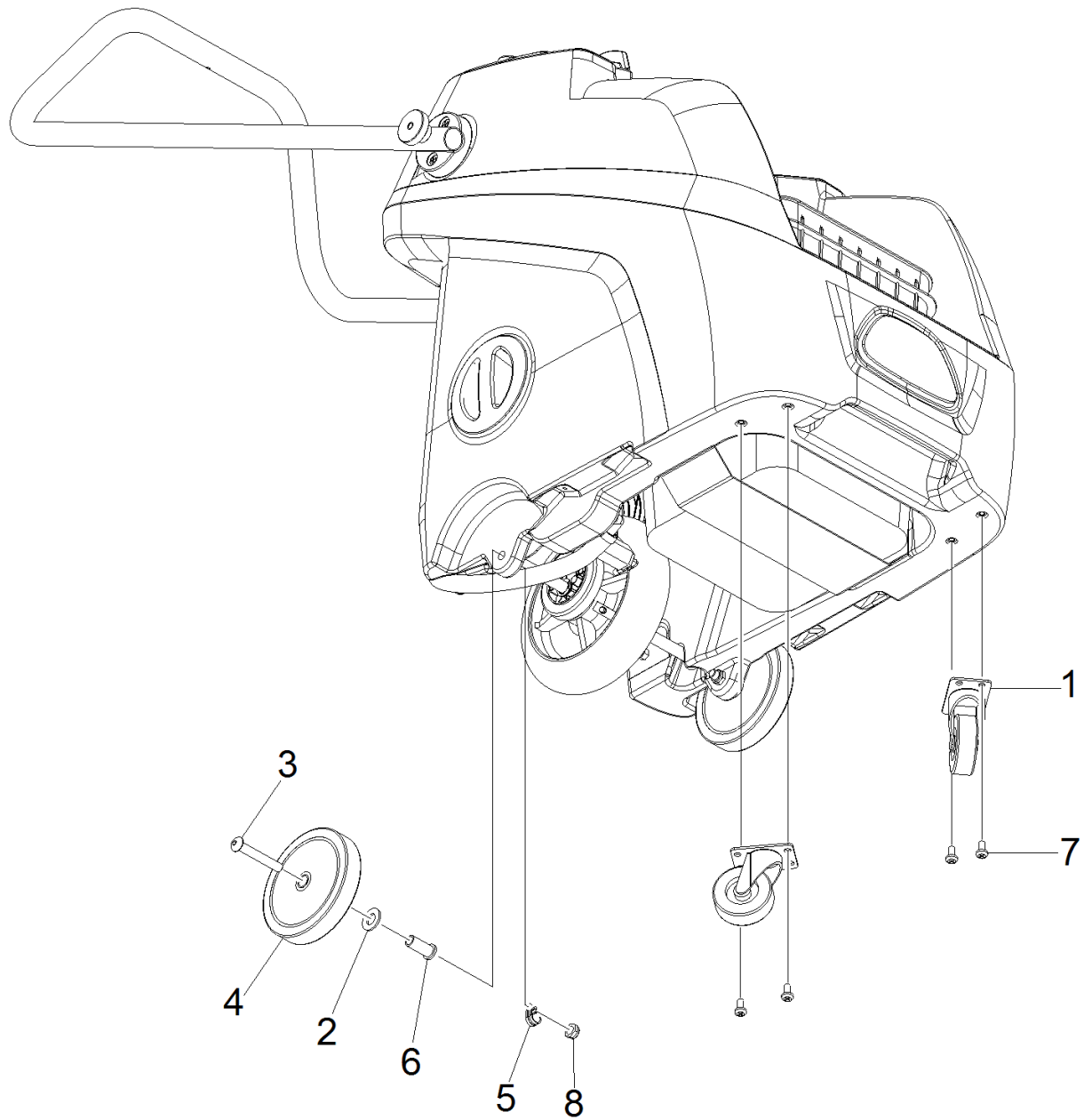
22 Pumpe

POS	Artikelnr.	Beschreibung	Anzahl	Einheit
1	8.637-878.0	HOSE, 1/2ID WIREBOUND X 29"	1.000	ST
2	8.637-557.0	RETAINER, CHECK VALVE	1.000	ST
3	8.637-558.0	SHEET, CHECK VALVE	1.000	ST
4	8.637-542.0	DIAPHRAGM, 4.75" DIA	1.000	ST
5	8.637-541.0	CLAMP, LOWER DIAPHRAGM	1.000	ST
6	8.637-449.0	CLAMP, UPPER DIAPHRAGM	1.000	ST
7	8.637-448.0	RING, CLAMP	1.000	ST
8	8.637-447.0	HOUSING, PUMP	1.000	ST
9	8.637-141.0	SCREW, 10-32 X .75 TMS SS BLK	2.000	ST
10	8.632-751.0	Schraube KA50 x 16, WN1412 A2 SS	12.000	ST
11	8.627-764.0	Schraube 1/4-20 X 3/4 PTHMS SS	1.000	ST
12	8.627-099.0	Mutter 10-32 HEX NYLOCK SS	2.000	ST
13	8.623-315.0	Schelle 3/8"	2.000	ST
14	8.600-581.0	Mutter 1/4-20 HEX NYLOCK SS	1.000	ST



30 Leitungssystem

POS	Artikelnr.	Beschreibung	Anzahl	Einheit
1	8.637-838.0	GASKET, SOLUTION FILL	1.000	ST
2	8.637-601.0	HOSE, 1/2ID 11/16OD X 23" CLR	1.000	ST
4	8.637-587.0	NIPPLE, 1/2NPT X 2 LG	1.000	ST
5	8.637-563.0	BRKT, RECOVERY	1.000	ST
6	8.637-934.0	STRAP, RETAINING	2.000	ST
7	8.639-093.0	TANK, GREY, B60/10C	1.000	ST
8	8.637-141.0	SCREW, 10-32 X .75 TMS SS BLK	1.000	ST
9	8.635-868.0	CAP, CLEAN WATER	1.000	ST
10	7.303-104.0	Schraube 5x16 -A2-70 (IN6RD)	1.000	ST
11	8.627-099.0	Mutter 10-32 HEX NYLOCK SS	1.000	ST
12	8.623-315.0	Schelle 3/8"	1.000	ST
13	8.623-279.0	Kette	1.000	ST
14	8.639-057.0	HSBRB, 1/2MPT X 1/4HOSE 90 NYL	1.000	ST
15	8.622-374.0	Schraube 1/4-20 X.59 PPHMS SS C	6.000	ST
16	8.600-153.0	HOSEBARB, 1/2MPT X 1/2 HOSE 90	1.000	ST
17	8.637-933.0	CLIP, X-MAS TREE, BLACK	4.000	ST
18	6.413-586.0	Kugelhahn ohne Griff	1.000	ST
19	5.035-459.0	Kupplungsstueck Kugelhahn	1.000	ST
20	5.035-404.0	Drehgriff	1.000	ST
21	5.035-369.0	Stange	1.000	ST

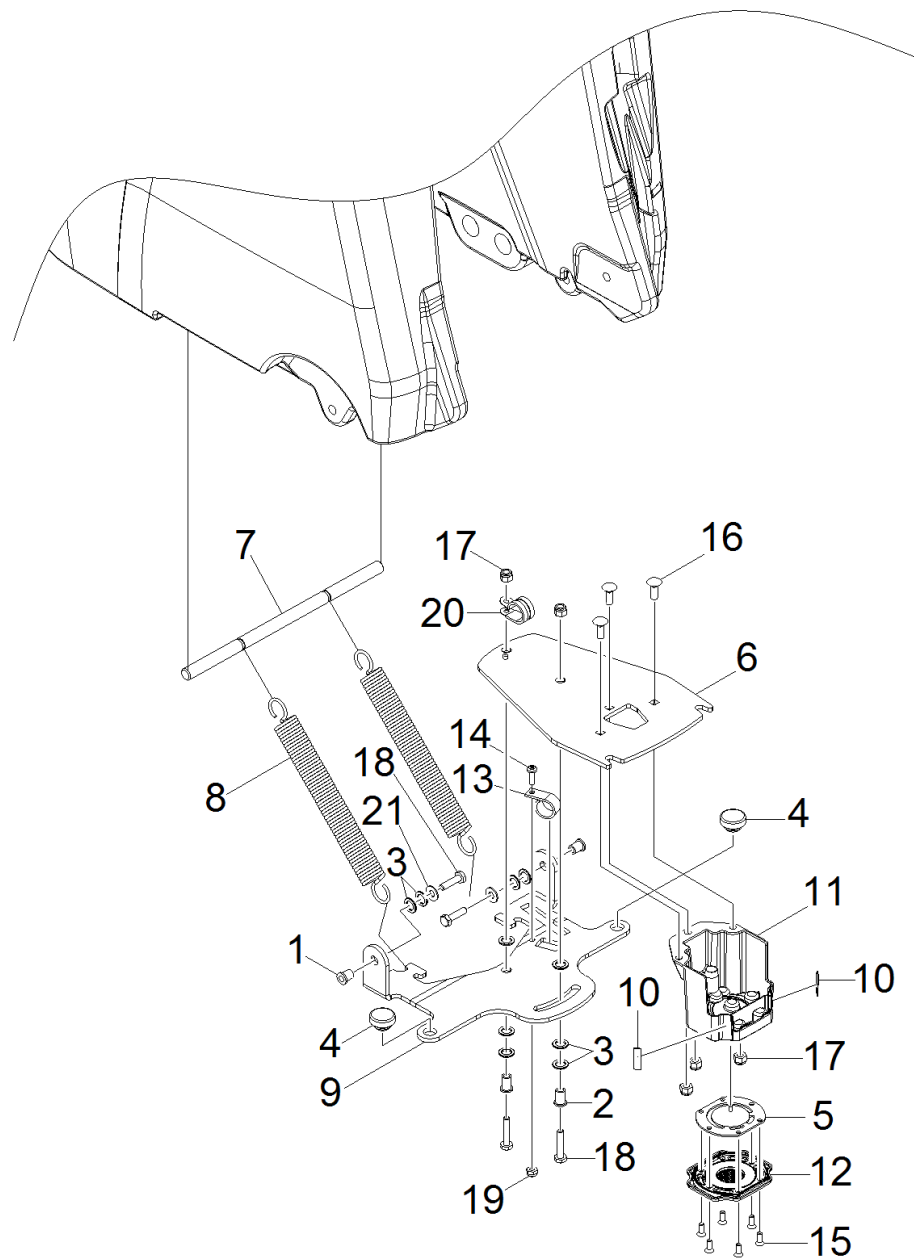


40 Raeder

POS	Artikelnr.	Beschreibung	Anzahl	Einheit
1	8.637-564.0	CASTER, SWIVEL, 2.50 IN	2.000	ST
2	8.627-938.0	Scheibe 1/2"ID X1~D X .08~ NYL	2.000	ST
3	8.627-744.0	Schraube 3/8-16x2,5	2.000	ST
4	8.625-977.0	WHEEL, 5"D X 1~ X .5~ID GRY	2.000	ST
5	8.623-341.0	Klammer	1.000	ST
6	8.622-891.0	BEARING, FLANGED	2.000	ST
7	8.622-374.0	Schraube 1/4-20 X.59 PPHMS SS C	4.000	ST
8	8.600-563.0	Mutter 3/8-16 HEX NYLOCK THIN SS	2.000	ST

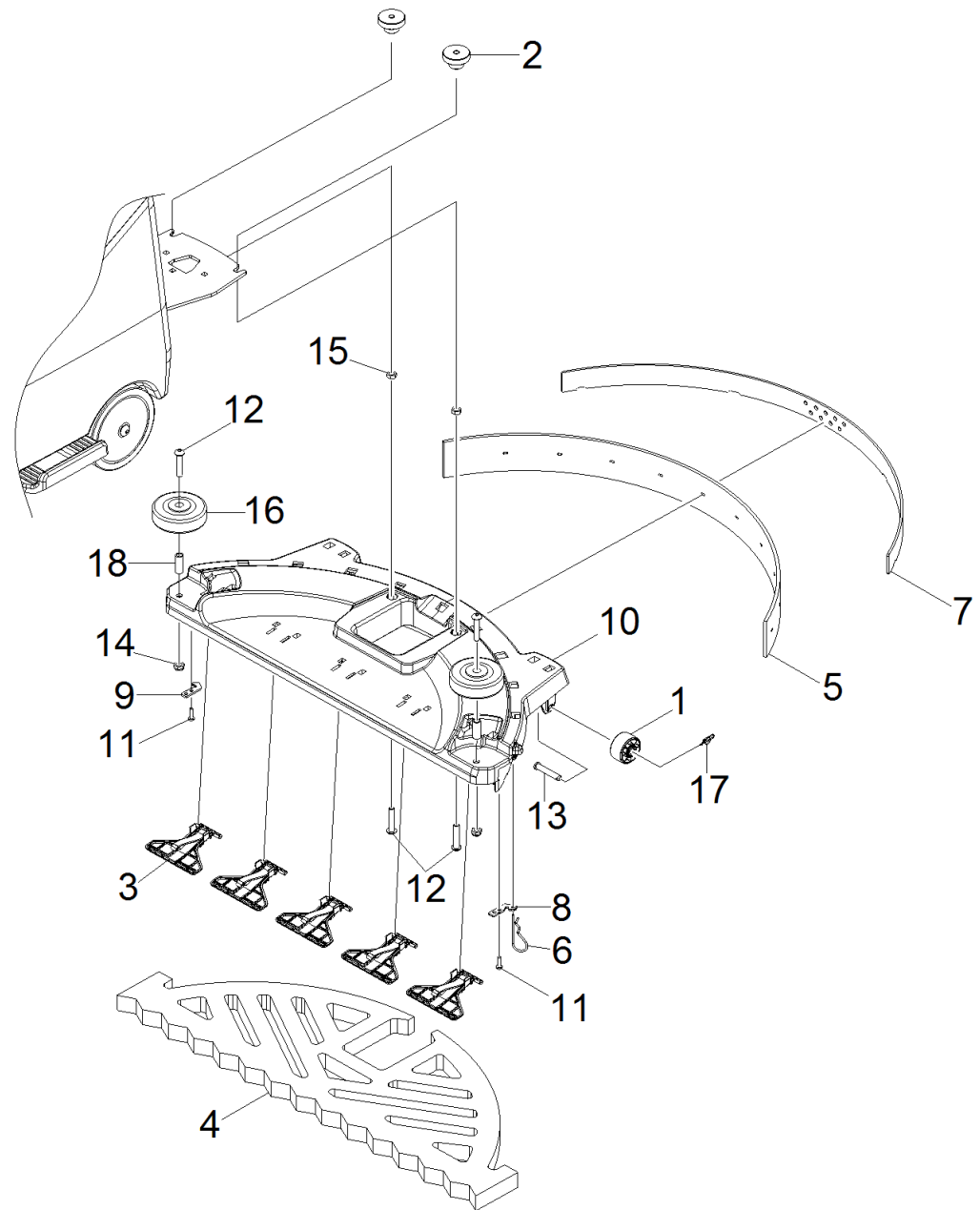
50 Saugbalken

POS	Beschreibung	Anzahl	Einheit
51	Saugbalkenanhebung	1.000	ST
52	Saugbalken	1.000	ST



51 Saugbalkenanhebung

POS	Artikelnr.	Beschreibung	Anzahl	Einheit
1	8.637-917.0	BUSHING, .250 X .375 X .500 BRZ	2.000	ST
2	8.637-585.0	BUSHING, .250 X .375 X .625 BRZ	2.000	ST
3	8.637-584.0	WASHER, 3/8 X .625 X .063 THR	10.000	ST
4	8.637-583.0	BUMPER, RUBBER 1.00" DIA	2.000	ST
5	8.637-566.0	CHECK VALVE	1.000	ST
6	8.637-556.0	BRKT, SQUEEGEE LINK	1.000	ST
7	8.637-545.0	BAR, SPRING ATTACH	1.000	ST
8	8.637-544.0	SPRING, EXT, 1.0 OD X 9.00L	2.000	ST
9	8.637-532.0	BRKT, SQUEEGEE LIFT	1.000	ST
10	8.637-502.0	VELCRO, HOOK, 1 X .30	2.000	ST
11	8.637-441.0	BLOCK, SUCTION	1.000	ST
12	8.637-440.0	GRATE, SUCTION	1.000	ST
13	8.635-499.0	Schelle	1.000	ST
14	8.627-547.0	Schraube 10-32 X 5/8 PPHMS SS	1.000	ST
15	8.627-528.0	SCR, 10-32 X 1/2 FHMS 100 DEG	6.000	ST
16	8.627-418.0	SCR, 1/4-20 X 3/4 CARRIAGE	3.000	ST
17	8.627-187.0	Mutter 1/4-20 Hex Nylock	5.000	ST
18	8.627-381.0	SCREW	4.000	ST
19	8.627-099.0	Mutter 10-32 HEX NYLOCK SS	1.000	ST
20	8.623-339.0	CLAMP, 7/8 DIA "P~CUSHIONED	1.000	ST
21	8.601-063.0	Scheibe 1/4 ID X 5/8 OD SS	2.000	ST



52 Saugbalken

POS	Artikelnr.	Beschreibung	Anzahl	Einheit
1	8.637-799.0	WHEEL, 1.61 OD X .313 ID X 1.00 W	2.000	ST
2	8.621-969.0	Drehknopf	2.000	ST
3	8.637-781.0	ASM, FLIPPER	5.000	ST
4	8.637-944.0	PAD, AUTOMOP, WHITE, PKG 5	1.000	ST
5	8.637-945.0	SQG, 2-3/8 X 31.12" L X 3/16 THK, URE	1.000	ST
5	8.637-590.0	Sauglippe 2-3/8 X 31.4" L X 3/16	1.000	ST
6	8.637-565.0	PLATE, SQUEEGEE RETAINER	1.000	ST
7	8.637-488.0	STRAP, LATCH	1.000	ST
8	8.637-462.0	PLATE, SQUEEGEE RETAINER	1.000	ST
9	8.637-461.0	PLATE, SQUEEGEE HOOK	1.000	ST
10	8.637-439.0	DECK, SQUEEGEE	1.000	ST
11	7.303-104.0	Schraube 5x16 -A2-70 (IN6RD)	2.000	ST
12	8.627-740.0	SCR, 5/16-8 X 1.75 BSHCS SS	4.000	ST
13	8.627-267.0	BolzenS 5/16 X 1.75 PLTD	2.000	ST
14	8.627-184.0	Mutter 5/16-18 HEX NYLOCK THIN SS	2.000	ST
15	8.622-230.0	Mutter 5/16-18 JAM SS C	2.000	ST
16	8.601-102.0	Rad 3" DIA CUSHION RUBBER	2.000	ST
17	8.600-866.0	Splint 5/16" RING	2.000	ST
18	8.600-135.0	Spannmuffe .435 X 1.10	2.000	ST

3 ASM, FLIPPER (8.637-781.0)

POS	Artikelnr.	Beschreibung	Anzahl	Einheit
30	8.637-442.0	FLIPPER, PAD	1.000	ST
40	8.637-505.0	Klettverschluss 1x2	1.000	ST