

## **Ersatzteilliste**

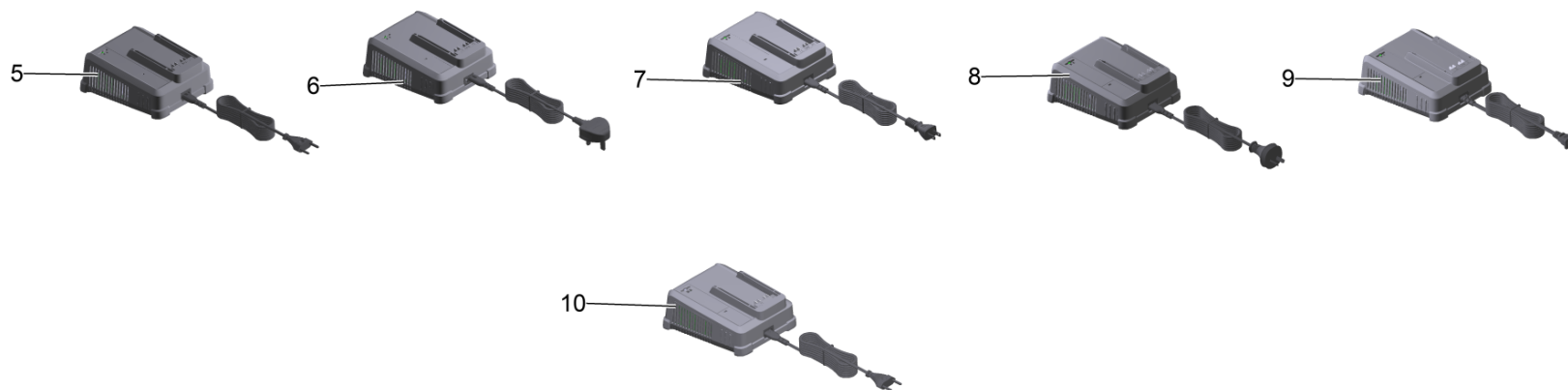
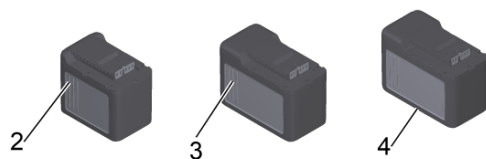
(1.042-505.0) CS 400/36 Bp Pack \*EU

## Inhaltsverzeichnis

---

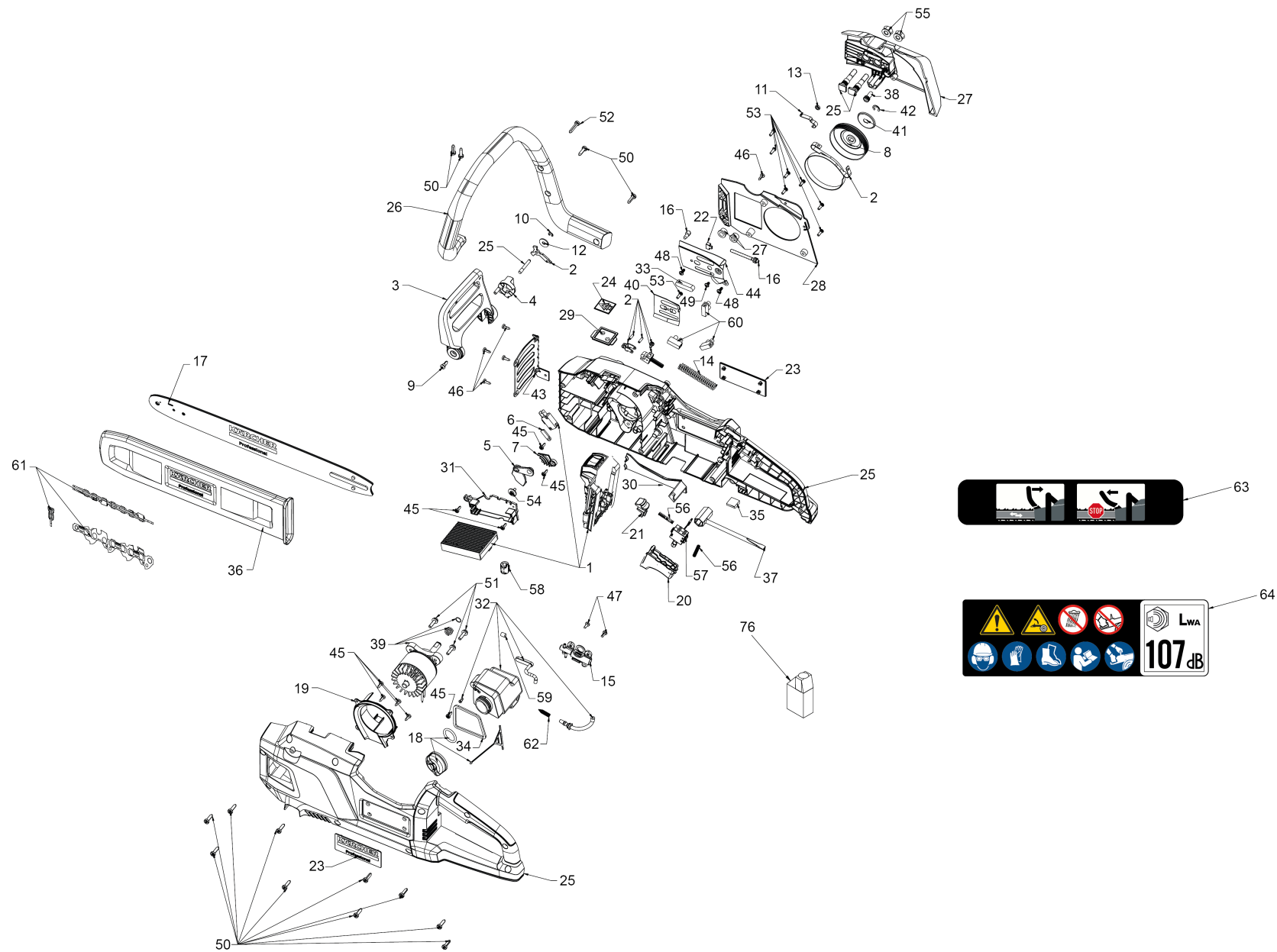
CS 400/36 Bp Pack *EU (1.042-505.0)	3
1 CS 400/36 Bp	5

---



## CS 400/36 Bp Pack \*EU (1.042-505.0)

POS	Artikelnr.	Beschreibung	Anzahl	Einheit
1		CS 400/36 Bp	1	ST
2	2.042-022.0	Battery Power+ 36/60 *INT	1	ST
3	2.445-043.0	Battery Power+ 36/75 *INT	1	ST
4	2.445-075.0	Battery Power+ 36/75 *CUL	1	ST
5	2.445-045.0	Ladegeraet Battery Power+ 36/60 *EU	1	ST
6	2.445-047.0	Ladegeraet Battery Power+ 36/60 *GB	1	ST
7	2.445-049.0	Ladegeraet Battery Power+ 36/60 *JP	1	ST
8	2.445-051.0	Ladegeraet Battery Power+ 36/60 *AU	1	ST
9	2.445-053.0	Ladegeraet Battery Power+ 36/60 *CUL	1	ST
10	2.445-054.0	Uni-Lader Battery Power+ 18-36/60 *EU	1	ST
11	2.445-070.0	Starter Kit Battery Power+ 36/75 *EU	1	ST
12	2.445-071.0	Starter Kit Battery Power+ 36/60 *EU	1	ST



## 1 CS 400/36 Bp

POS	Artikelnr.	Beschreibung	Anzahl	Einheit
1	6.444-907.0	Set Batteriekasten Elektronik	1	ST
2	6.444-908.0	Set Hebel Bremse	1	ST
3	6.444-909.0	Griff	1	ST
4	6.444-910.0	Feststellknebel	1	ST
5	6.444-911.0	Verbindung	1	ST
6	6.444-912.0	Fixierung	1	ST
7	6.444-913.0	Dichtungsplatte	1	ST
8	6.444-914.0	Kettenrad Trommel	1	ST
9	6.444-572.0	Schraube	1	ST
10	6.444-567.0	Sicherungsring	1	ST
11	6.444-569.0	Feder	1	ST
12	6.444-603.0	Unterlegscheibe	1	ST
13	6.444-568.0	Distanzhuelse	1	ST
14	6.444-915.0	Feder	1	ST
15	6.444-551.0	Oelpumpe	1	ST
16	6.444-916.0	Set Schraube	1	ST
17	2.042-019.0	Fuehrungsschiene Kettensaege 40 cm	1	ST
18	6.444-917.0	Deckel Oeltank	1	ST
19	6.444-918.0	Abdeckung	1	ST
20	6.444-919.0	Druecker	1	ST
21	6.444-920.0	Taste Sperre	1	ST
22	6.444-921.0	Block Kettenspanner	1	ST
23	5.385-502.0	Schild Logo geclipst L Professional	2	ST
24	5.385-506.0	Schild Signet geclipst M Professional	1	ST
25	6.444-922.0	Set Gehaeuse	1	ST
26	5.042-204.0	Griff CS 400/36 Bp	1	ST
27	5.042-205.0	Schutzhaube CS 400/36 Bp	1	ST
28	5.042-206.0	Deckel CS 400/36 Bp	1	ST
29	5.042-207.0	Halterung Signet M geklipst	1	ST
30	5.042-208.0	Abdeckung CS 400/36 Bp	1	ST
31	5.042-210.0	Halterung Elektronik CS 400/36 Bp	1	ST
32	6.444-923.0	Set Oeltank	1	ST
33	6.444-924.0	Gummi	1	ST

## 1 CS 400/36 Bp

POS	Artikelnr.	Beschreibung	Anzahl	Einheit
34	6.444-925.0	Abdichtung Oeltank	1	ST
35	6.444-926.0	Gummiplatte	1	ST
36	5.042-209.0	Kettenschutz CS 400/36 Bp	1	ST
37	6.444-927.0	Werkzeugschlüssel	1	ST
38	6.444-928.0	Zahnrad	1	ST
39	6.444-929.0	Set Motor	1	ST
40	6.444-930.0	Platte Fuehrung	1	ST
41	6.444-546.0	Unterlegscheibe	1	ST
42	6.444-545.0	Sicherungsring	1	ST
43	6.444-931.0	Abdeckung Schutz	1	ST
44	6.444-932.0	Platte Fuehrung	1	ST
45	6.444-510.0	Schraube M4x12	10	ST
46	6.444-933.0	Schraube Torx M4x12	5	ST
47	6.444-550.0	Schraube M4X1.411 PH TORX T20 B	2	ST
48	6.444-934.0	Schraube Torx M4x10	2	ST
49	6.444-935.0	Schraube Torx M4x7	1	ST
50	6.444-575.0	Schraube	14	ST
51	6.444-549.0	Schraube M5x0,8 Torx	3	ST
52	6.444-573.0	Schraube	1	ST
53	6.444-936.0	Schraube Torx M4x12	8	ST
54	6.444-835.0	Schraube	1	ST
55	6.444-937.0	Mutter	2	ST
56	6.444-938.0	Feder	2	ST
57	6.444-939.0	Schalter	1	ST
58	6.444-940.0	Ferritring	1	ST
59	6.444-873.0	Filter	1	ST
60	6.444-566.0	Klemme	3	ST
61	2.042-018.0	Saegekette "Oregon" 40cm	1	ST
62	6.444-672.0	Feder	1	ST
63	5.385-148.0	Aufkleber Hinweis Kettensaeger	1	ST
64	5.385-146.0	Aufkleber Hinweis Kettensaeger	1	ST
76	6.990-531.0	Bio Saegeketteneol Planto Tac 68	1	ST